



# NAUPAKA NEWS

RELAX, SHOP & PLAY AT WAIKOLOA BEACH RESORT

## In This Issue



### 1 • LANDMARKS

Visitors can learn about the area's history by exploring significant landmarks throughout the resort.



### 4 • SHOPPING GUIDE

From casual beach wear to fine art, there's a retailer who has what you want.



### 7 • DINING

Hungry? There are many delightful dining choices at Waikoloa Beach Resort.



Scan code to sign up to receive Waikoloa Beach Resort updates.



## Discovering the Landmarks of Waikoloa Beach Resort

JUST AS HAWAI'I IS SO MUCH MORE THAN AWE-INSPIRING SUNSETS DRAPED UPON DRAMATIC LANDSCAPES, Waikoloa Beach Resort is more than its luxury hotels, dreamy beaches, tempting restaurants and shopping centers. If you want to delve deeper in the area's history, significant landmarks can be discovered throughout the sprawling property — everything from ancient petroglyphs etched into lava rock by the area's earliest residents to tributes commemorating the Hawaiian kings and queens who reigned in the islands for more than 150 years.

More recently, paintings, sculptures and murals added throughout the resort tell its storied history.

### PETROGLYPHS

Long before the land was developed, early Hawaiians etched pictures into the *pāhoehoe* lava rock that is spread across the land. Many theories have been proffered about the meaning of these carvings, but one that is most widely accepted suggests that these rock carvings may be a historical record of families, commemorative of births and other significant events.



Some of the best petroglyphs in the state can be found within Waikoloa Beach Resort on the Kings' Trail, also known as Ala Kahakai National Historic Trail, easily accessible between the Kings' Golf Course and Kings' Shops. Complimentary guided tours are offered Thursday through Sunday.

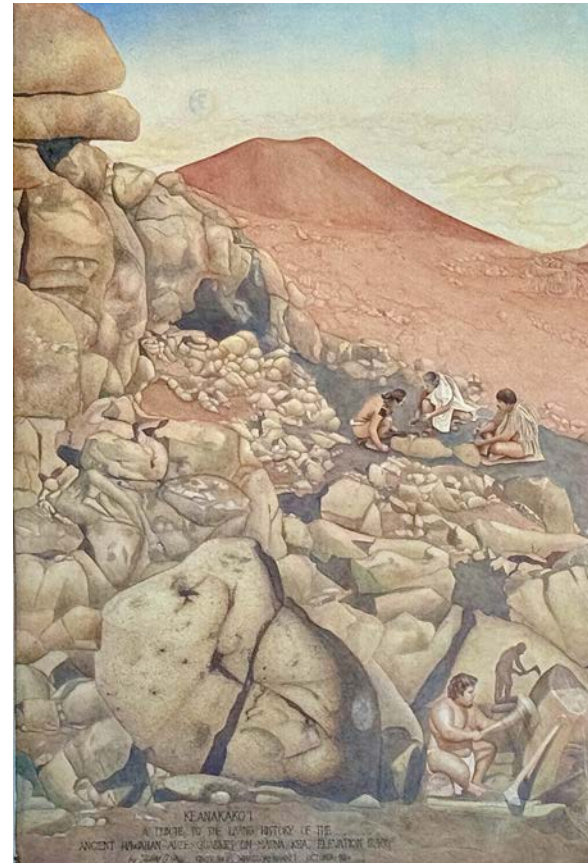
### ROYALTY

Between 1758 and 1917, Hawaiian kings and queens ruled the islands with 'Anaeho'omalu as part of the royal inheritance passed down from King Kamehameha I to his descendants. The 14 kings and queens who ruled here have been memorialized on descriptive bronze plaques at various locations around the **Kings' Shops** and **Queens' Marketplace** shopping centers.

### CONNECTING THE PAST AND THE PRESENT

Also on permanent display at the Kings' Shops are "living history" murals created by local, internationally acclaimed artist Calley O'Neill. These resulted from her ongoing study of life in old Hawai'i and Hawaiian cultural values.

Shown in the *mauka* (upland) mural is *Keanakāko'i Quarry*, located at 12,000 feet just below the summit of Mauna Kea, which is an important ancient sacred site where Native Hawaiian artisans quarried dense basalt to roughly craft stone tools to take back to their settlements. The mural honors famed Micronesian master navigator/teacher Papa Mau Piailug, who came to Hawai'i in 1976 to guide the historic sailing canoe Hōkūle'a's first voyage to Tahiti. In the mural, Mau is using a *ko'i* (adze), the primary tool master wood carvers used in ancient times to carve *wa'a* (canoes).



"The murals symbolically represent Hawai'i and its rich history," O'Neill says. "I was always interested in studying ancient Hawaiian life, the values — the spirit of aloha — that I could capture. The murals are not a look back, but a reminder of what we need to learn from the indigenous people."

The second mural is titled *E Mau Na Waiwai O Hawai'i*, which means 'Long Live the Ancient Treasures and Timeless Wisdom of Old Hawai'i' — "the wisdom that we need now for life to survive and thrive on Earth," O'Neill says. "The treasures are the land, the forest and the timeless wisdom to live sustainably on the land."

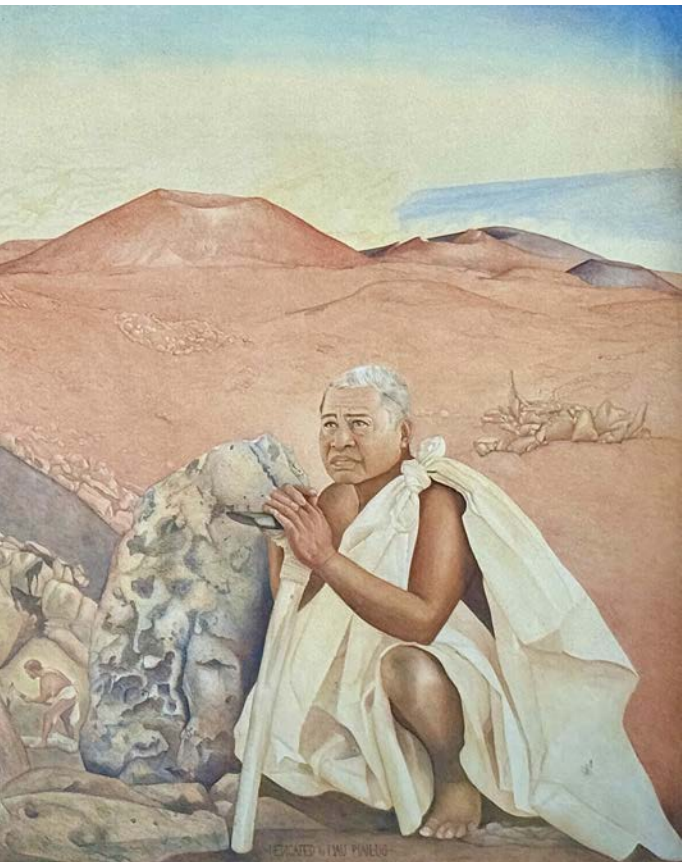
In a tribute to the native Hawaiians, **Waikoloa Beach Marriott Resort & Spa** constructed an authentic imu (underground oven) that is used at the weekly sunset luau to make *kalua* pork (roasted pig) in the same method that has been done for centuries on the land.

"The *imu* is a work of art," says local publicist Jaisy Jardine. "The unique setup is not found anywhere else on the Kohala Coast."

### ART AS ENVIRONMENT

Renowned hotel developer Christopher B. Hemmeter had a different vision for art at The Hyatt Regency Waikoloa (now the **Hilton Waikoloa**





From left to right:  
Petroglyphs, Keanakākoʻi  
Quarry mural and chariot  
with driver and horses  
sculpture.

Village) when it opened in 1988. Seeking a combination of art, elegance and downright fun, his goal was to fill the public spaces with authentic Polynesian, Asian and Western art.

“My dad was a dreamer,” says Hemmeter’s son, Christopher R. Hemmeter, who was given the task of procuring the art collection for the hotels. “He had seen some Chinese Imperial art when he was on a trip, and he wanted me to go to Asia to collect and commission works we could display around the resorts.”

From the artisans of Bali to the bronze foundries of Bangkok to the marble quarries of Yang Ping — a small village near the Mongolian border where green, black, rose and white marble has been carved for more than 2,000 years — the Hemmeters traveled, often negotiating prices with sign language.

The 1,800-piece art collection at Hilton Waikoloa Village is a popular attraction for visitors meandering along the museum walkways’ four sections in the main lobby, Palace Tower and Ocean Tower where paintings, carvings, massive sculptures, statues and other rare pieces are plentiful.

Two favorites are the larger-than-life Buddha sculpture at serene Buddha Point near hole 6 on the Beach Nine golf course, and the chariot with driver and horses found outside the meeting rooms.

“The Chinese horses and carriage down by the meeting rooms at the Hilton is an oversized replica of a small sculpture my dad had seen,” the younger Hemmeter recalls. “Can you imagine what it took to not only create that piece, but to transport it from Asia to Hawai‘i?”

O’Neill’s painting *The Three Hawaiian Graces* (and *The Four Elements*) is a favorite in the Hilton’s permanent museum walkway collection. The 6’ by 4’ Politec glaze work was created using the labor-intensive glaze painting technique of the Renaissance masters.

“It is the most well-known of my works,” she says. “Chris Hemmeter Jr. commissioned the painting. Sandro Botticelli’s *THREE GRACES* — the central detail from his *Primavera* (c. 1482) — was my inspiration. The grace, strength and beauty of Hawaiian women, rooted in the land, guided this work.” It was equally important, O’Neill explains, to bring in the deeper story of nature. “Pele, the force of fire, is depicted on the lower right, creating the Earth. Water flows in the center and air moves through the figure on the left.”

“It’s easy to sit back, relax and enjoy the sheer beauty and serenity of Waikoloa Beach Resort,” says Scott Head, vice president of Resort Operations. “But for anyone interested in finding a deeper meaning or delving further into the fascinating and inspiring culture of Hawai‘i, there’s a whole lot to be discovered.” ●





## Queens' Marketplace

Open Daily | Store hours vary, please call or visit their websites for hours and more information

### ART & JEWELRY

**Genesis Galleries**  
(808) 886-1770

**Maui Divers Jewelry**  
(808) 886-4817

**Lava Light Galleries**  
(808) 756-0778

**Mashka Jewelry**  
(808) 731-7310

### ENTERTAINMENT

**Kozy's Comedy & Magic Show**  
(808) 430-1957

**Waikoloa Luxury Cinemas**  
(808) 464-3009

### FASHION

**Blue Ginger Family**  
(808) 886-0022

**Cariloha**  
(808) 886-2608

**Coconut Ave**  
(808) 731-4024

**Crocs™ Shoe Store**  
(808) 886-0213

**Kona Surf N' Sandals**  
(808) 886-0898

**Mahina**  
(808) 886-4000

**Malibu Shirts**  
(808) 886-0003

**Olivia Clare Boutique**  
(808) 657-4307

**OluKai**  
(808) 731-4088

**Oshima Surf & Skate**  
(808) 339-7305

**Reyn Spooner**  
(808) 886-1162

**Rip Curl**  
(coming soon)

### GROCERY

**Island Gourmet Markets**  
(808) 886-3577

### REAL ESTATE

**Hawai'i Life Real Estate Brokers**  
(800) 667-5028

**Kona Coast Vacations**  
(808) 329-2140

### SERVICES

**Hilton Grand Vacations Club**  
(808) 886-0945

**KOR Salon**  
(808) 886-8090

**ResorticaHawaii**  
(808) 881-8222

**Skin Factory Tattoo**  
(808) 661-5511

**Vacasa**  
(855) 861-5757

**Waikoloa Dental Clinic**  
(808) 886-0891

**Zen Re•Gen**

### SPECIALTY & GIFTS

**Claire's**  
(808) 886-8905

**Koawood Ranch**  
koawoodranch.com

**SoHa Keki**  
(808) 909-3888

**SoHa Living**  
(808) 464-4268

**Sunglass Hut**  
(808) 886-0274

### SPORT & ACTIVITY

**Bike Works Beach & Sports**  
(808) 886-5000

## Eat Well in Waikoloa

Whether you're a visitor seeking a taste of authentic Hawai'i, a full-time resident committed to shopping locally or a professional looking to elevate your client experience, Kohala Food Hub makes it easy to eat well, shop consciously and support more than 150 Hawai'i Island farmers and food artisans through their convenient weekly pick-up service.

More than 400 seasonal products are featured on their Online Market website, with everything from fresh fruits and vegetables to pasture-raised meats, eggs, baked goods, pantry staples, coffee, chocolate, body care items, nursery plants and artisanal gifts. Simply select the items you want and one of the four locations available for pick up each Wednesday. It's that easy! All produce is harvested within two days of delivery, ensuring peak freshness, longer shelf life and higher nutritional value.

"Thanks to our direct relationships with producers, Kohala Food Hub is able to offer premium food at prices that often fall below those of traditional grocery retailers — delivering strong value while deepening connections to place, food and community," shares Kohala Food Hub's sales and marketing representative Kat Cuzma.



Residents can also subscribe to the weekly or biweekly CSA (Community Supported Agriculture) Box for a rotating mix of produce. The new in-property delivery service, available for homes from Mauna Kea Resort to Four Seasons Hualālai, can make preparations much more convenient for property managers, guaranteeing a fully stocked kitchen for guests upon arrival.

Orders can be placed online between noon Friday and midnight Monday. Pickup is available each Wednesday at four locations along the coast.

- The Shores | Waikoloa Beach Resort | 2:45 – 4 pm
- Fitness Forever | Waikoloa Village | 3 – 7 pm
- Juice 101 | Mauna Lani Resort | 2:45 – 4 pm
- Blue Dragon | Kawaihae | 3 – 7 pm

Go to <https://kohalafoodhub.localfoodmarketplace.com/Products> to start a free new account, then shop and select the appropriate pickup or delivery location. For questions email [shop@kohalafoodhub.com](mailto:shop@kohalafoodhub.com) or call/text (808) 896-3179.





## Kings' Shops

Open Daily | Store hours vary,  
please call or visit their websites for  
hours and more information

### ACCESSORIES

**Sunglass Hut**  
(808) 886-0593

### APPAREL

**Crazy Shirts**  
(808) 886-9303

**Giving Bracelets**  
(808) 886-0292

**Jams World**  
(808) 796-3182

**Kahala**  
(808) 886-0902

**Kona Harley-Davidson**  
(808) 464-4033

**lululemon**  
(808) 867-8466

**Mary Jane's**  
(808) 886-2707

**Noa Noa**  
(808) 886-5449

**Rip Curl**  
(808) 886-1952

**Tommy Bahama**  
(808) 886-8865

**Tori Richard**  
(808) 886-8308

**TravisMathew**  
(808) 865-2452

### ART & JEWELRY

**Kohala Coast Fine Art**  
(808) 886-4240

**Nā Hōkū**  
(808) 886-7599

**Manta Jewelry & Gifts**  
(808) 849-4444

**Royal Gold**  
(808) 886-7701

**Tiffany & Co.**  
(808) 886-1931

### SERVICES

**Big Island Motorcycle Co.**  
(808) 886-2011

**Hamajang Studio**  
(808) 205-5565

**Hawaii Keiki Museum**  
(808) 315-8862

**Hawaii Vacation Condos  
by Outrigger**  
(808) 886-0036

**Hilton Grand Vacations**  
(808) 333-5511

**Hulakai**  
(808) 731-7945

**Kings' Shops Management Office**  
(808) 886-8811

**Kohala Coast Properties**  
(808) 886-6600

**Shell Gas Station**  
(808) 886-9512

**Team Clean**  
(808) 944-8255, ext. 108

### SPECIALTY & GIFTS

**Beach Goddess**  
(808) 481-1668

**CocoNene**  
(808) 909-9019

**Martin & MacArthur**  
(808) 886-0696

**Nana's Clay Flowers**  
(808) 657-9642

**Whalers General Store**  
(808) 886-7057



## Waikoloa Beach Resort Golf Shop

### Golf Pro Shop

Open Daily | 6:30 am – 6 pm  
(808) 886-7888

## Waikoloa Beach Marriott Resort & Spa

### Travel Traders

(808) 886-8146  
Daily | 8 am – 10 pm

### Mandara Spa

(808) 886-8191  
Daily | 10 am – 5:30 pm

## Hilton Waikoloa Village

### Dancing Dolphins and Big Island Marketplace

(808) 886-1234 ext. 1744, 1746

**Dolphin Quest**  
(808) 987-3434

**Dolphin Quest Gift Shop**  
(808) 987-3434

**Journey**  
(808) 756-0926

**Kohala Salon**  
(808) 886-2848

**Kohala Spa**  
(808) 886-2828

**Kohala Spa Gift Shop**  
(808) 886-2838

**Nā Hōkū**  
(808) 886 5019

**Things Hawaiian**  
(808) 895-7757

See our  
website  
for more  
information.



MARRIOTT RESORT  
WAIKOLOA BEACH

[waikoloabeachmarriott.com](http://waikoloabeachmarriott.com)

## SUNSET LŪ'AU

**Mondays and Wednesdays | Starting at 5 pm**

EXECUTIVE CHEF JAYSON KANEKOA PRESENTS AN AUTHENTIC MENU for the popular Sunset Lū'au with fresh ingredients sourced from Hawai'i Island purveyors. Experience slow roasted kalua pig and savor lū'au favorites including Waipi'o Valley poi, 'ahi tuna poke, *hō'i'o* fern shoot salad, *pulehu* steaks and grilled chicken with Hamakua Ali'i mushrooms.

Following dinner take a journey through the South Pacific with song and dance from Tahiti, New Zealand, Hawai'i and Sāmoa. The spellbinding Samoan fire knife dance is a spectacular sight to see!

For reservations visit [TheSunsetLuau.com](http://TheSunsetLuau.com)

Cancellations must be received 24 hours before your scheduled Luau. There will be no refund if cancellation is not received 24 hours out.



(808) 886-1234 | [HiltonWaikoloaVillage.com](http://HiltonWaikoloaVillage.com)

## LEGENDS OF HAWAI'I LŪ'AU — OUR BIG ISLAND STORY

**Sundays and Fridays | 5 pm | Lagoon Lanai**

TREAT YOURSELF TO THE ONCE-IN-A-LIFETIME CULTURAL IMMERSION of our lū'au at Hilton Waikoloa Village. Brought to you by Tihati Productions, the Legends of Hawai'i Lū'au dinner and show brings to life the ancestral songs and dances that retell the epic stories of Hawai'i Island and her remarkable people, culminating in the spectacular and thrilling fire knife dance. You will have the opportunity to capture photo memories with our lū'au performers. The meal includes island favorites such as huluhuli chicken, seared island catch-of-the-day, traditional *imu* roasted kālua pork and fresh Hawaiian style desserts including coconut haupia and guava cheesecake. Tropical drink favorites include mai tais, blue Hawaiis and lava flows.

Make reservations in advance at  
[LegendsLuau.com](http://LegendsLuau.com). Book early to get your spot.





# DINING GUIDE

Restaurants open daily unless noted.



CLOCKWISE  
FROM ABOVE:  
Roy's Waikoloa Bar  
& Grill; Kamuela  
Provision Company;  
Gypsea Gelato

## GOLF COURSE

### Tropics Ale House and Restaurant

(808) 886-4287  
TropicsAleHouse.com

Lunch and dinner  
11 am – 10:30 pm

### Mauka Bar and Grill

(808) 886-7600  
MaukaBarandGrill.com

Breakfast and lunch  
7:30 am – 5 pm

### Mauka Steakhouse

(808) 886-7600  
MaukaBarandGrill.com

Dinner  
5 – 9 pm

## LAVA LAVA BEACH CLUB

(808) 769-LAVA (5282)  
LavaLavaBeachClub.com

11:30 am – 9 pm

Brunch  
(Saturdays and Sundays only)  
11 am – 3 pm

Lunch  
11:30 am – 3 pm

Dinner  
3 – 9 pm



## HILTON WAIKOLOA VILLAGE

(808) 886-1234  
HiltonWaikoloaVillage.com/  
dining

### Breakfast Buffet

A lavish breakfast buffet at  
Water's Edge overlooking  
the saltwater lagoon.  
Kids under 12 eat free  
with a paid adult staying  
overnight.

7 – 10 am

### KPC – Kamuela Provision Company

KPC offers the Island of  
Hawai'i's most spectacular  
sunset views. Locally  
sourced cuisine, from  
prime steaks to Hawaiian  
seafood. Reservations  
recommended. The Bar at  
KPC features a bar food  
menu to pair with drinks  
while you enjoy the firepits  
and resort views, no  
reservation needed.

Tuesday – Saturday.  
5:30 – 9 pm

### Nui Italian

Authentic, family-friendly  
Italian dining including  
stone-fired pizzas, pastas,  
salads, and more.

Dinner  
5 – 9 pm

Bar & Lounge  
5 – 9 pm

*Validated parking during  
your meal with proof of \$50  
dining or drink purchase.*

### Lagoon Grill & Bar

Grab a burger, sandwich,  
salad, or Hawaiian bowl for  
lunch or early dinner and  
watch dolphins playing in  
the lagoon below.

11 am – 5 pm

### Lagoon Chill

Dole Whip, sweet treats,  
souvenirs. Located next to  
Lagoon Grill.

8 am – 3 pm

### Waikoloa Coffee

6 am – 3 pm MAKAI  
6 am – noon Ocean Tower



### Kona Tap Room

Pub-style bar menu with  
*pupus* and shareable plates,  
plus Kona Brewing Company  
beers on tap. Located at the  
Main Lobby.

Open 7 days a week, with live  
music Fridays, Saturdays and  
Sundays, 4:30 – 11 pm

Live Music  
7 – 10 pm

### Orchid Marketplace

Grab and go salads and  
sandwiches. Made-to-order  
pizzas. Located at Kona Pool.

10 am – 4 pm daily; open until  
8:30 pm on Mondays

### Shaka Cones

Ice cream, sorbets and  
milkshakes. Located at  
Kona Pool.

12 – 4 pm

## WAIKOLOA BEACH MARRIOTT RESORT & SPA

(808) 886-8165  
Marriott.com

### Hawaii Calls Restaurant & Lounge

Breakfast  
6:30 – 11 am

Lunch  
11 am – 5 pm

Happy Hour  
2 – 4 pm

Dinner  
5 – 9 pm

**SECOND SATURDAYS  
PRIME RIB & CRAB BUFFET**  
Includes live entertainment  
by premier local musicians

5 – 9 pm

**FRIDAYS, SATURDAYS, SUNDAYS  
LIVE ENTERTAINMENT**  
Featuring some of Hawai'i's  
local musical artists

Starting at 5:30 pm

### Nalu's Pool Bar

10:30 am – 5:30 pm

### Aka'ula Lanai Café

Lobby Level

6:30 – 11 am

## KINGS' SHOPS

### A-Bay's Island Grill

(808) 209-8494  
A-Bays.com

Breakfast, lunch and dinner  
8 am – midnight

### Foster's Kitchen

(808) 657-4500  
FostersKitchen.com

Lunch and dinner  
11 am – 10 pm

### Gypsea Gelato

(808) 886-1540  
GypseaGelato.com

11 am – 8 pm

### Island Fish & Chips

(808) 886-0005  
KingsShops.com/  
island-fish-chips

10 am – 8 pm

### Roy's Waikoloa Bar & Grill

(808) 886-4321  
RoysHawaii.com

Dinner  
4:30 – 8:30 pm

### Island Vintage Coffee

(808) 731-5700

Open daily at 6 am

### The Original Big Island Shave Ice Company

(808) 895-6069

Tuesday – Sunday  
11:30 am – 6:30 pm,  
full menu

6:30 – 7:30 pm,  
ice cream menu



# DINING GUIDE

Please check with individual restaurants on hours of operation.



Kuleana Rum Shack



Waikoloa Shrimp Company

## QUEENS' MARKETPLACE

Full-service restaurants.

**Bistro at the Cinemas**  
(808) 464-3009  
HawaiiCinemas.com/  
the-bistro

**Kuleana Rum Shack**  
(808) 238-0786  
KuleanaRum.com

**Gecko Girlz**  
GeckoGirlz.com

**Patina**  
(coming soon)

**Romano's Macaroni Grill**  
(808) 443-5515  
MacaroniGrill.com

**Starbucks Coffee Company**  
(808) 886-1888  
Starbucks.com

**Tommy Bahama Marlin Bar & Store**  
(coming soon)



## QUEENS' MARKETPLACE FOOD COURT

Grab & go and food court eateries.

**Dairy Queen/Orange Julius**  
(808) 886-1029

**Da Ramen Kind**  
**Island Greens**  
IslandGreensHI.com

**L&L Hawaiian Barbecue**  
HawaiianBarbecue.com

**Pono Pastries**  
@ponopastries

**Waikoloa Pizza**  
WaikoloaPizza.com

**Waikoloa Shrimp Company**  
WaikoloaShrimpCo.com



WaikoloaBeachResort.com